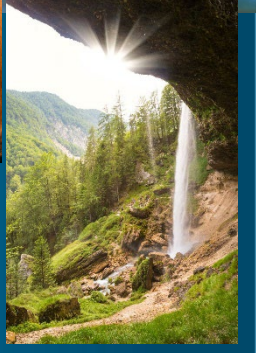
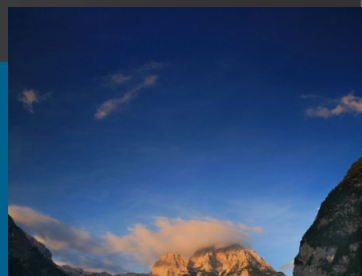
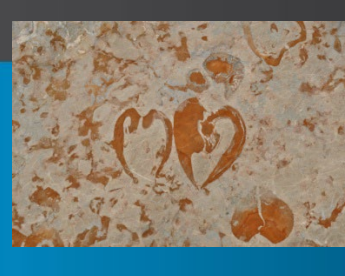
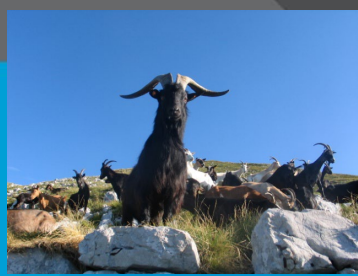


# TRIGLAVSKI NARODNI PARK







**Triglavski narodni park je nekaj najdragocenejšega,  
kar Slovenci premoremo.**

**Bogat živalski in rastlinski svet, izjemna gorska krajina  
ter bogata kulturna dediščina.**

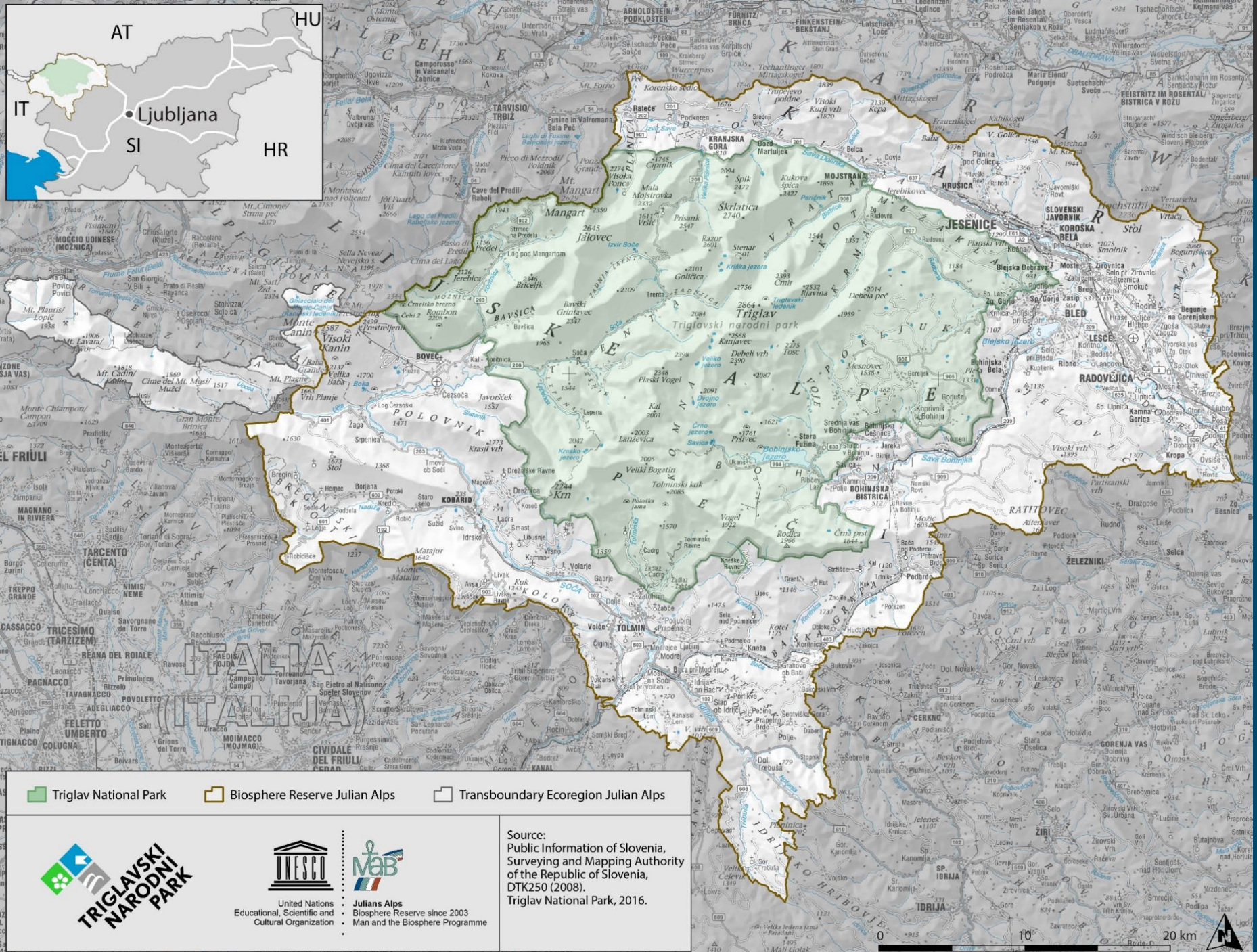
**Živeti v narodnem parku  
ali blizu njega je posebna danost.**




# NARAVOSLOVNE DELAVNICE









■ Triglav National Park
 ■ Biosphere Reserve Julian Alps
  Transboundary Ecoregion Julian Alps



**TRIGLAVSKI  
NARODNI  
PARK**



United Nations  
Educational, Scientific and  
Cultural Organization



Julians Alps  
Biosphere Reserve since 2003  
Man and the Biosphere Programme

Source:  
 Public Information of Slovenia,  
 Surveying and Mapping Authority of  
 the Republic of Slovenia,  
 DTK250 (2008).  
 Triglav National Park, 2016.





UČENCI BIOSFERNEGA OBMOČJA  
JULIJSKE ALPE  
in TRIGLAVSKI NARODNI PARK



Pristen stik učenca z naravo -  
odgovorno ravnanje do narave  
in ljudi v odrasli dobi.

## ZAVEZE SKUPNOSTI:

Javni zavod Triglavski narodni park:  
omogočanje šolam izvajanje  
nadstandardnih programov,  
ki bodo za šole brezplačni

Osnovne šole: vključevanje vsebin  
narodnega parka v svoje redne delovne  
načrte

SKUPNOST ŠOL  
BIOSFERNEGA OBMOČJA  
JULIJSKE ALPE

**TRIGLAVSKI  
NARODNI PARK**

COMMUNITY OF SCHOOLS OF  
THE JULIAN ALPS BIOSPHERE RESERVE  
TRIGLAV NATIONAL PARK



Ministry of Education, Science and Sports  
National Park Administration

Ministry of Education, Science and Sports  
National Park Administration





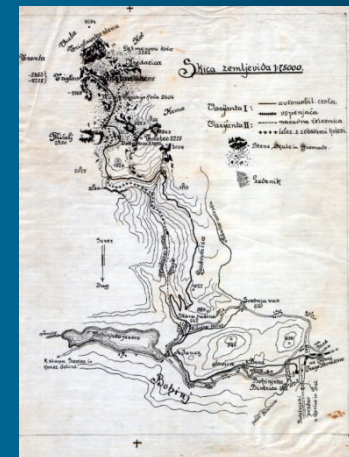
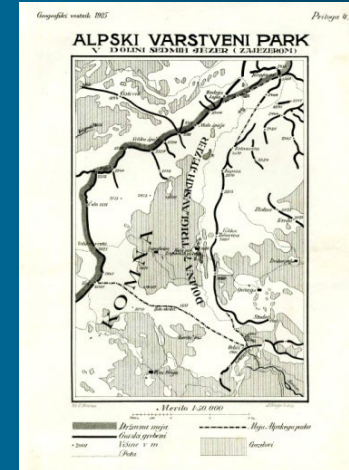
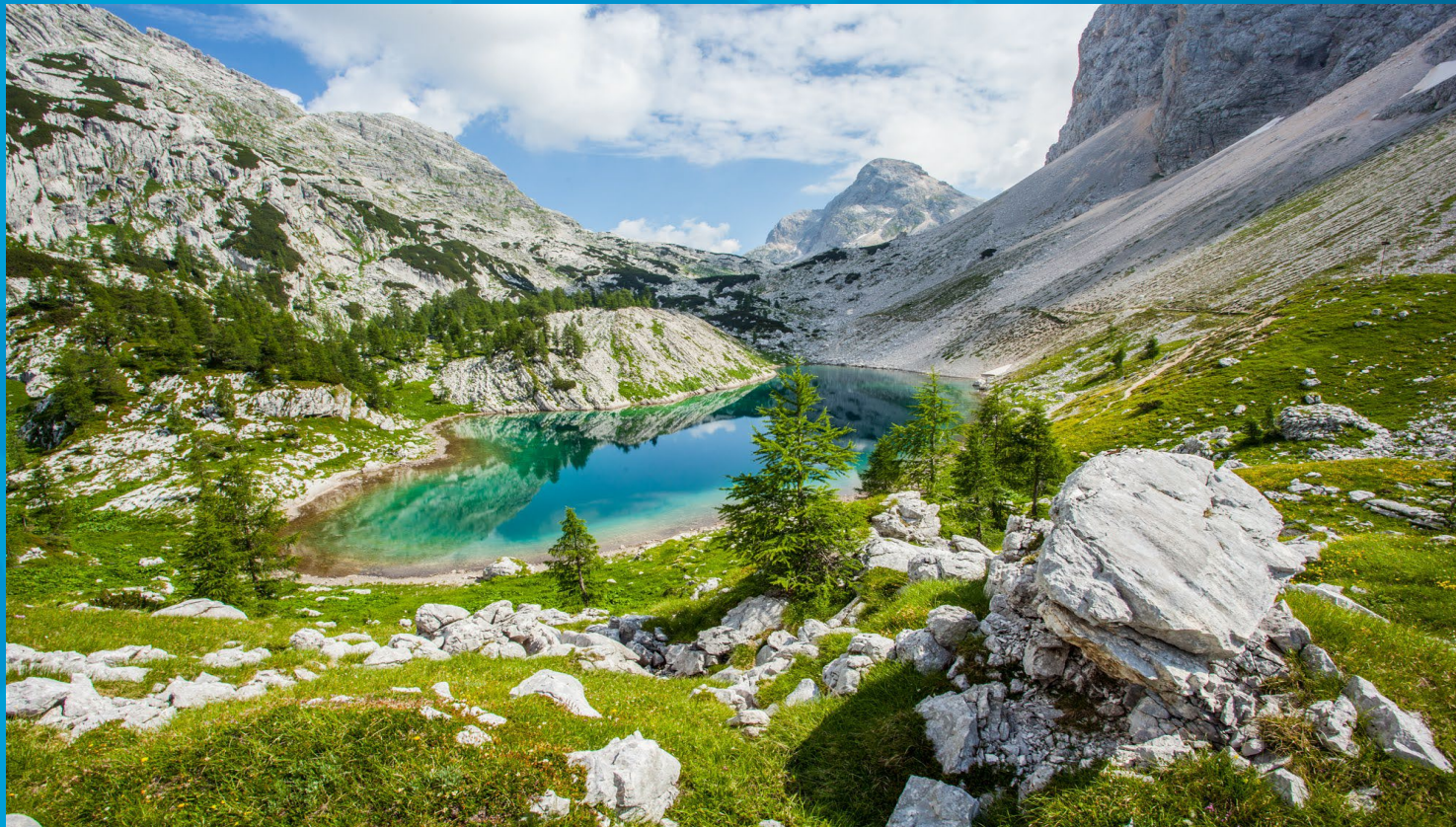
# TRIGLAVSKI NARODNI PARK

Prva zamisel: 1908

Alpski varstveni park v dolini Triglavskih jezer (1600 ha): 1924

Povečanje: 1961 Odlok o razglasitvi Doline triglavskih jezer

Zakon o Triglavskem narodnem parku: 1981





## Jedro parka so ostri grebeni s prepadnimi dolinami





Številne doline se iz vseh strani globoko  
in strmo zarezujejo v osrčje gorovja.





Gozd pokriva dve tretjini površine.  
Prevladujejo bukovi gozdovi.





## Izjemna pestrost rastlinskih in živalskih vrst





# NARAVA POZIMI MIRUJE

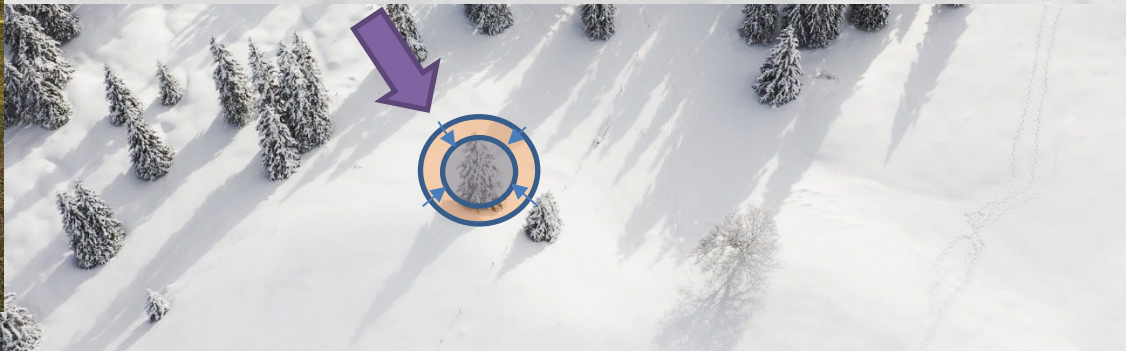
- listavci liste odvržejo
- iglice imajo majhno površino, pozimi imajo v sebi manj vode
- semena / čebulice čakajo na ugodne razmere
- rastline ne delajo novih poganjkov

















# NE PREŽIVIJO









# SE ODSELIJO

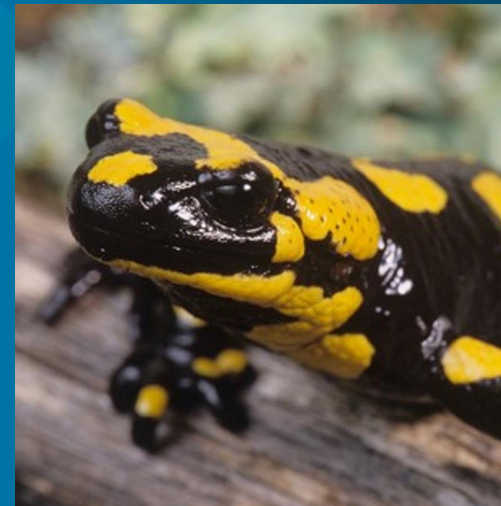
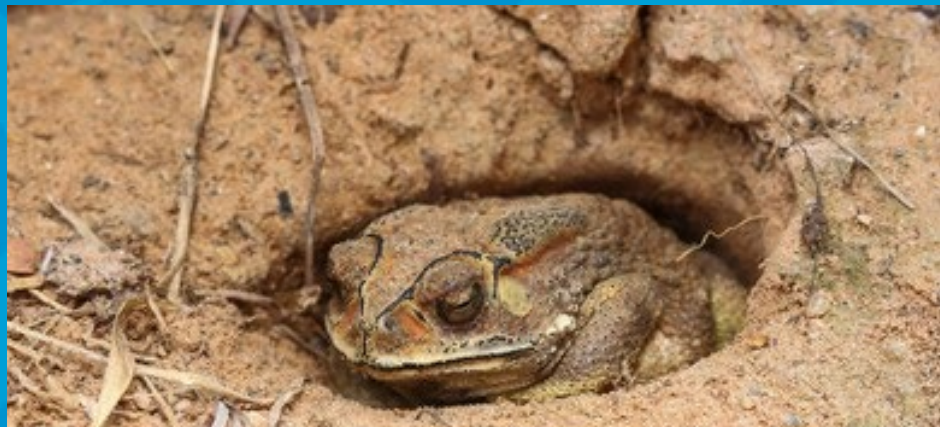






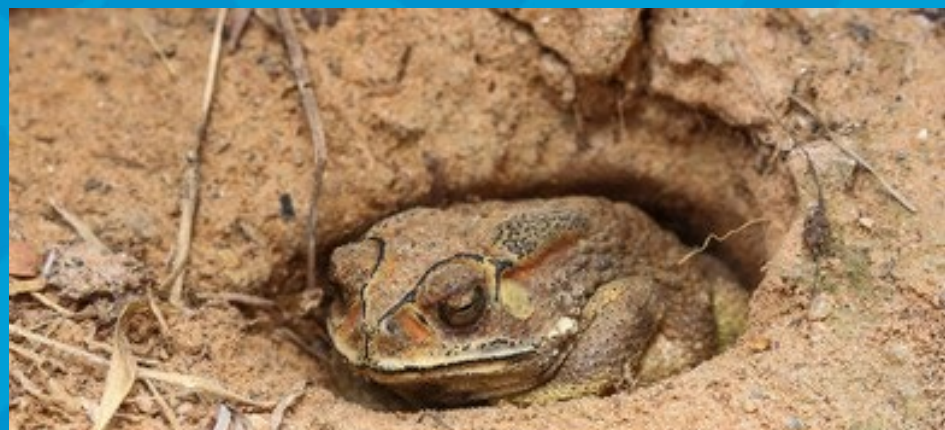


# BREZ STALNE TELESNE TEMPERATURE





# BREZ STALNE TELESNE TEMPERATURE OTRPNEJO









# DREMAJO





# DREMAJO









# HIBERNIRAJO





# S STALNO TELESNO TEMPERATURO HIBERNIRAJO

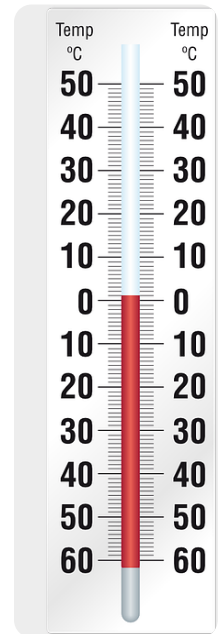


40°C



približa zmrzišču

jeseni povečajo  
telesno težo za  
30%



60 – 90 vdihov / min



4 – 6 vdihov / min

250 udarcev / min



30-80 udarcev/min

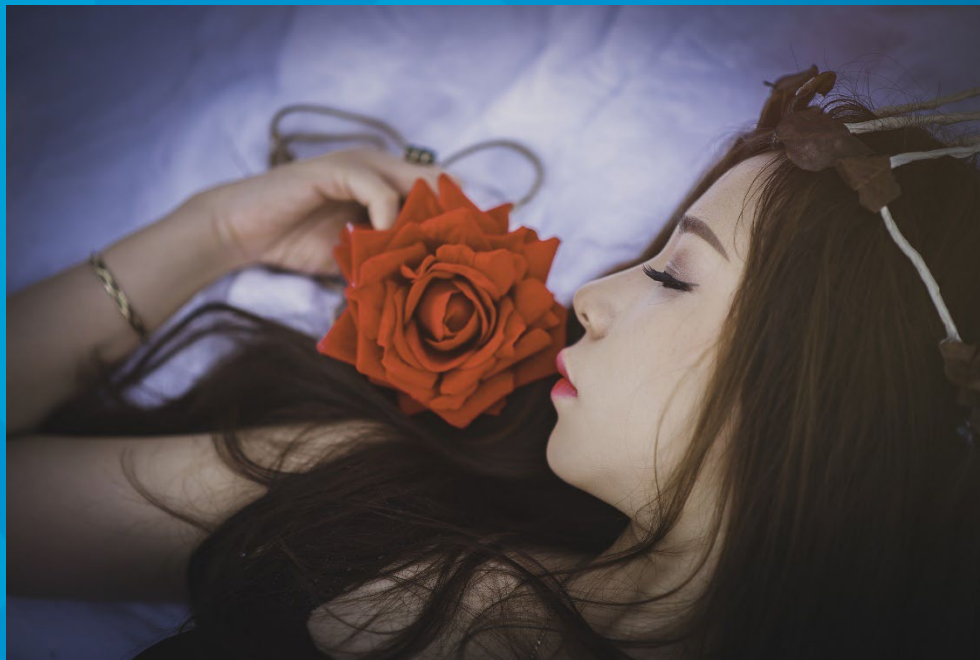


PRESNOVA /METABOLIZEM SE UPOČASNI





PRI LJUDEH GLEDE MIŠIČ VELJA: UPORABLJAJ ali pa JIH BOŠ IZGUBIL

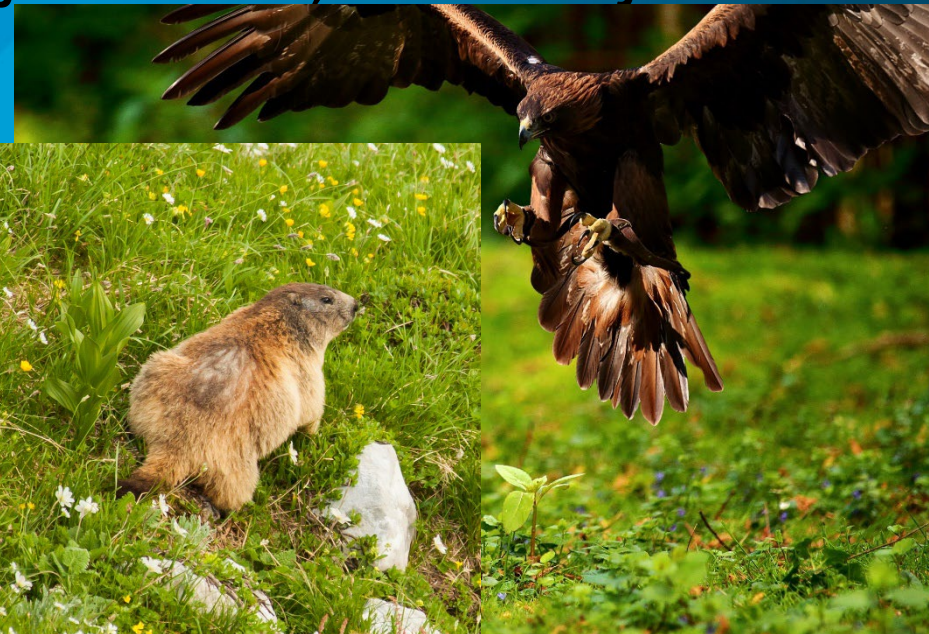
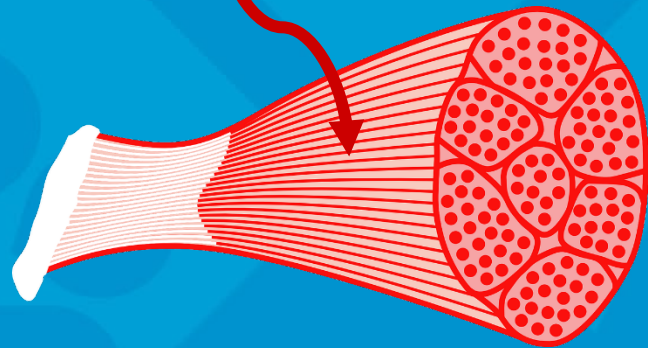




# ŽIVALI IMAJO NEVERJETNO SPOSOBNOST

moč mišic se jim ohrani kljub temu, da so dlje časa neaktivni

DUŠIK (N)





# SO AKTIVNE















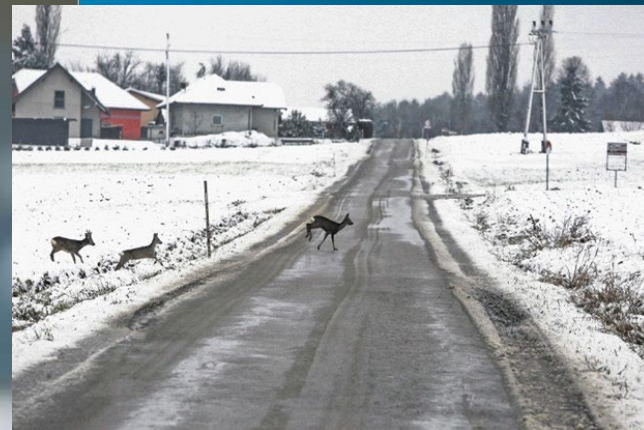


# Kdo se tu sprehaja?

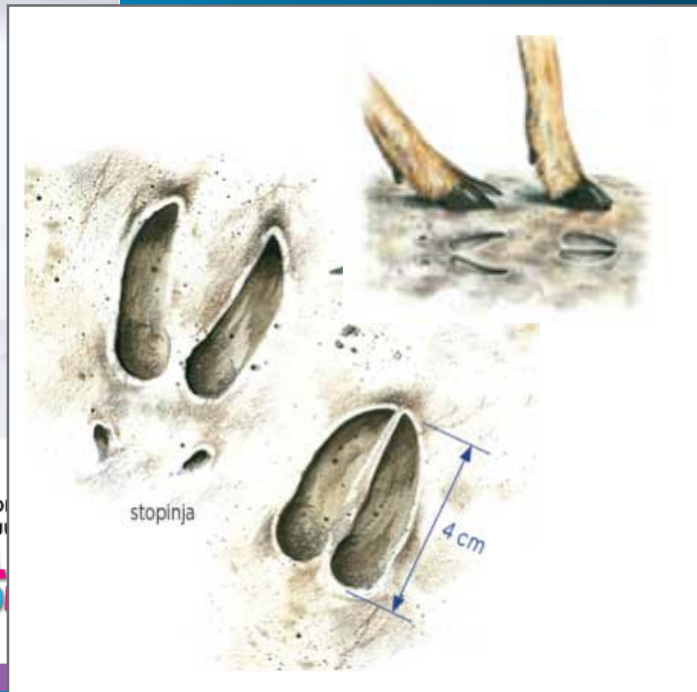




# SRNJAD











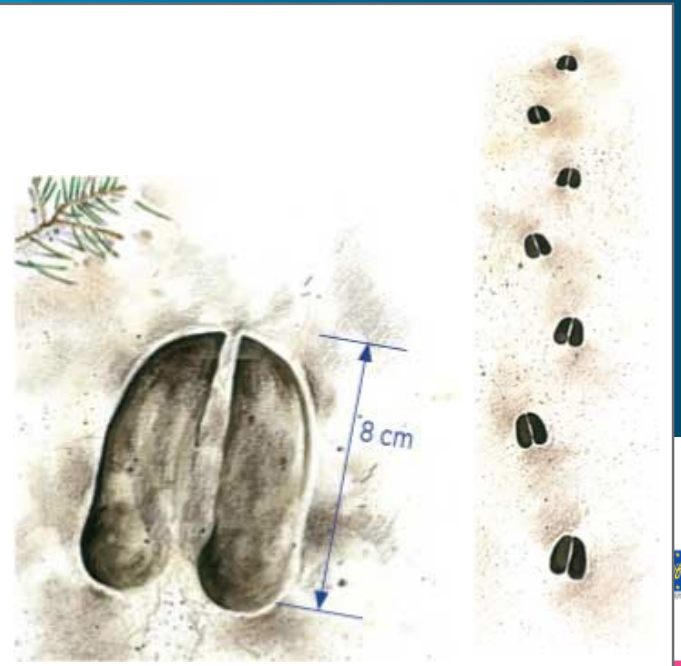
# JELENJAD







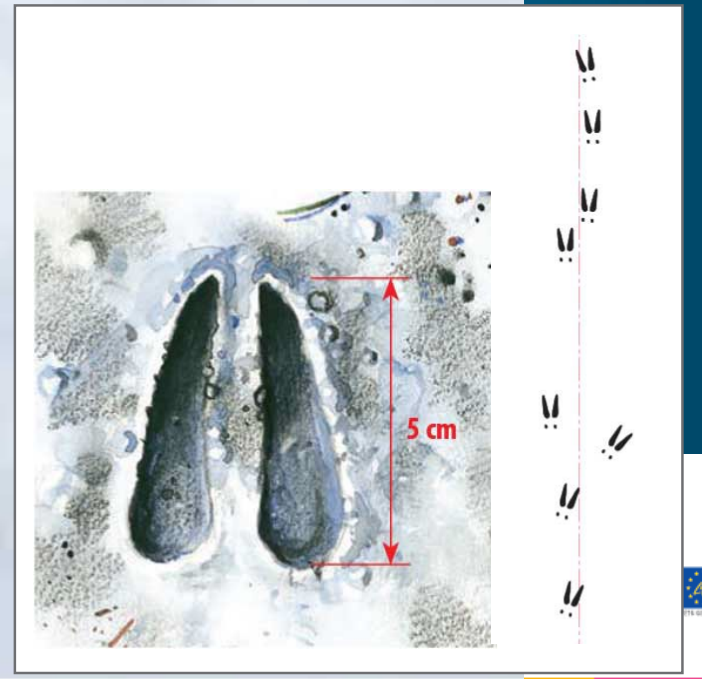
shutterstock.com · 595771667















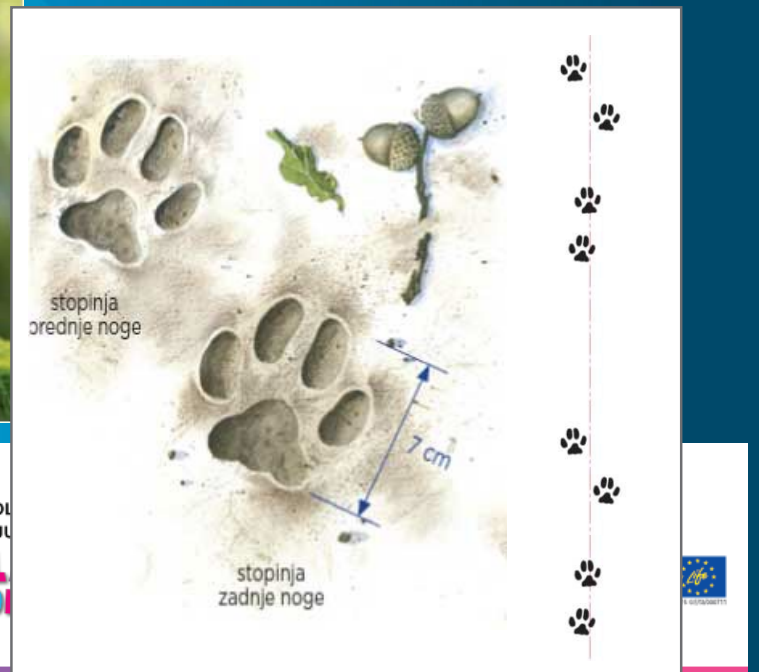




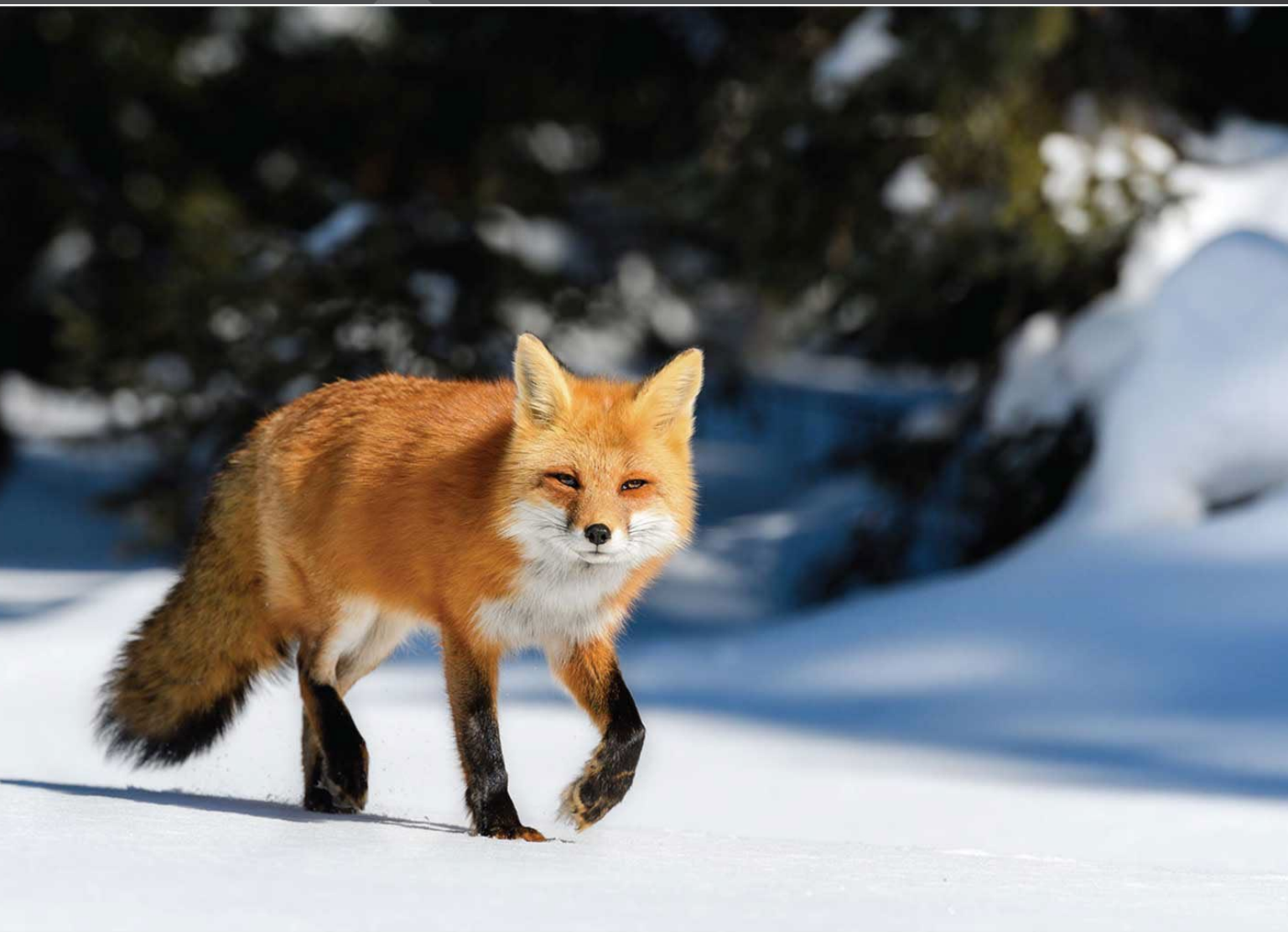




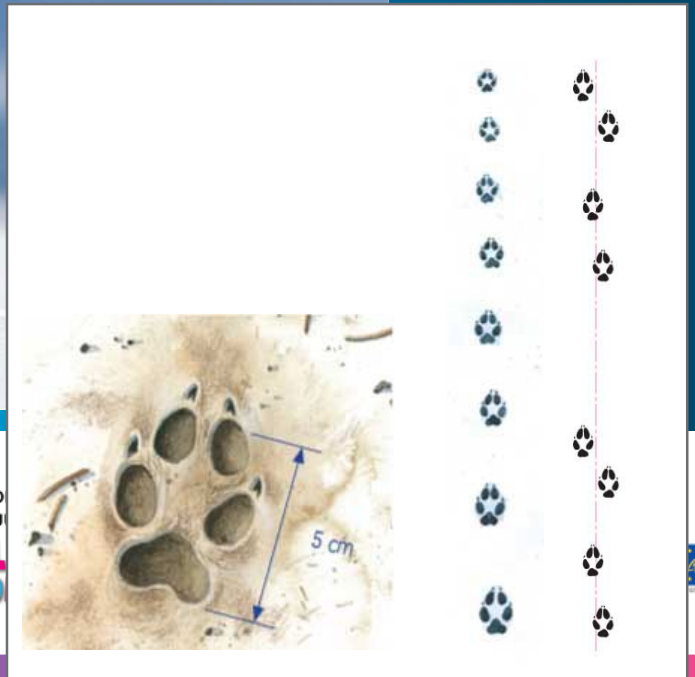
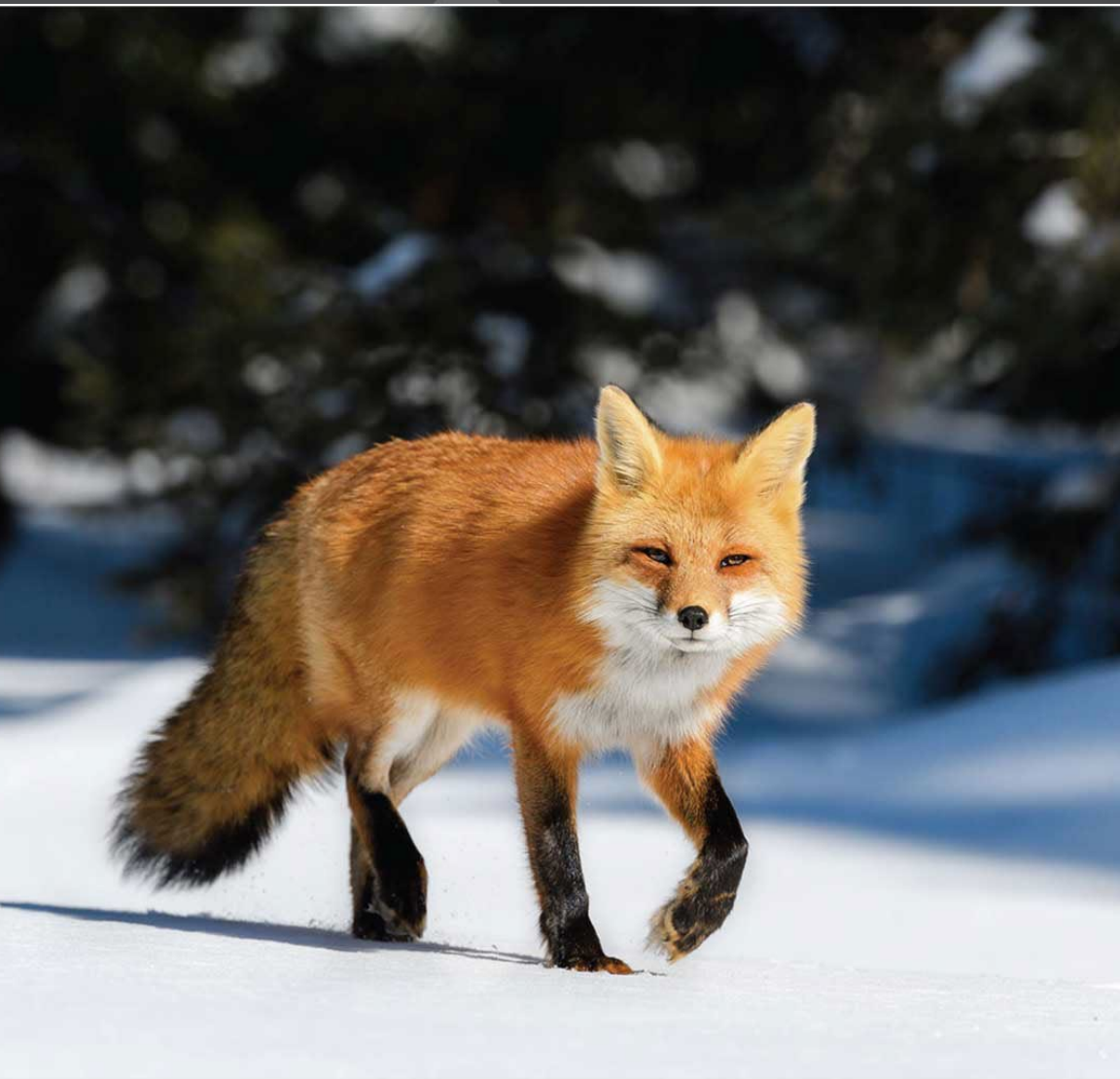








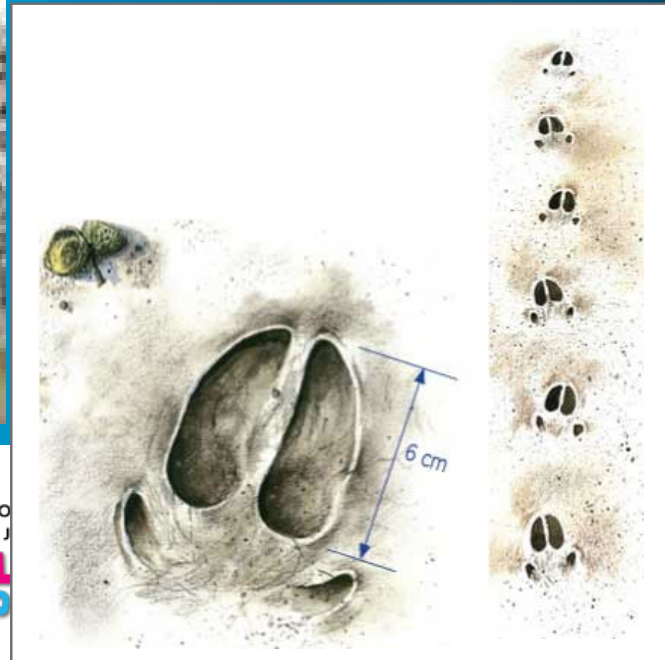
















© *naturija*





